

# *Epsilon EClipse*<sup>TM</sup>

Quick Start Guide

Potentiostat / Galvanostat



# Bioanalytical Systems, Inc.

2701 Kent Avenue

West Lafayette, Indiana 47906 USA

[www.basinc.com](http://www.basinc.com)

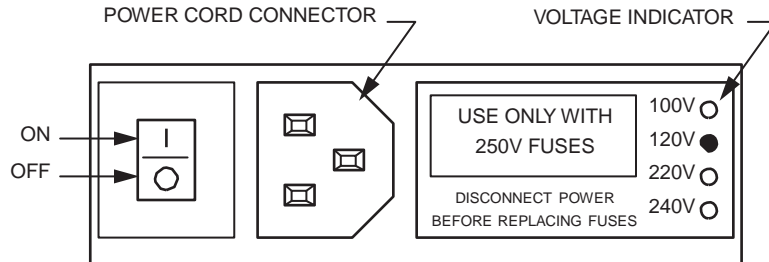
Thank you for purchasing the Epsilon EClipse™. Your new BASi instrument will provide years of service for your electrochemical requirements. The Epsilon EClipse™ was fully tested electronically and with a chemical test before shipping. The chemical test procedure (shown in the manual) and results are included in the folder. Please follow the procedure below when setting up your instrument.

A full electronic manual is available at [www.basinc.com/manuals](http://www.basinc.com/manuals).

## Power

The Epsilon EClipse™ system requires a grounded power supply, providing either 120 or 240 V at 50/60 Hz. Before connecting the power cord, check that the indicator next to the power connection shows the correct voltage (Figure 1).

Figure 1 Power Connection



If the indicator does not show the correct voltage, DO NOT TURN POWER ON. See the manual for full instructions to change setting.

## Software Installation

If you bought the Epsilon EClipse™ with a computer from BASi, the software is installed on the computer. Simply unpack and set up the computer.

If you are going to use a computer not supplied by BASi, then you will have to install the software on your computer. Place the CD in your CD ROM drive. If the PC does not have a CD ROM, the latest version of the software can be downloaded from BASi's website. The installation disk contains different installation programs. For new instruments, select the installation program in the USB folder on the disk.

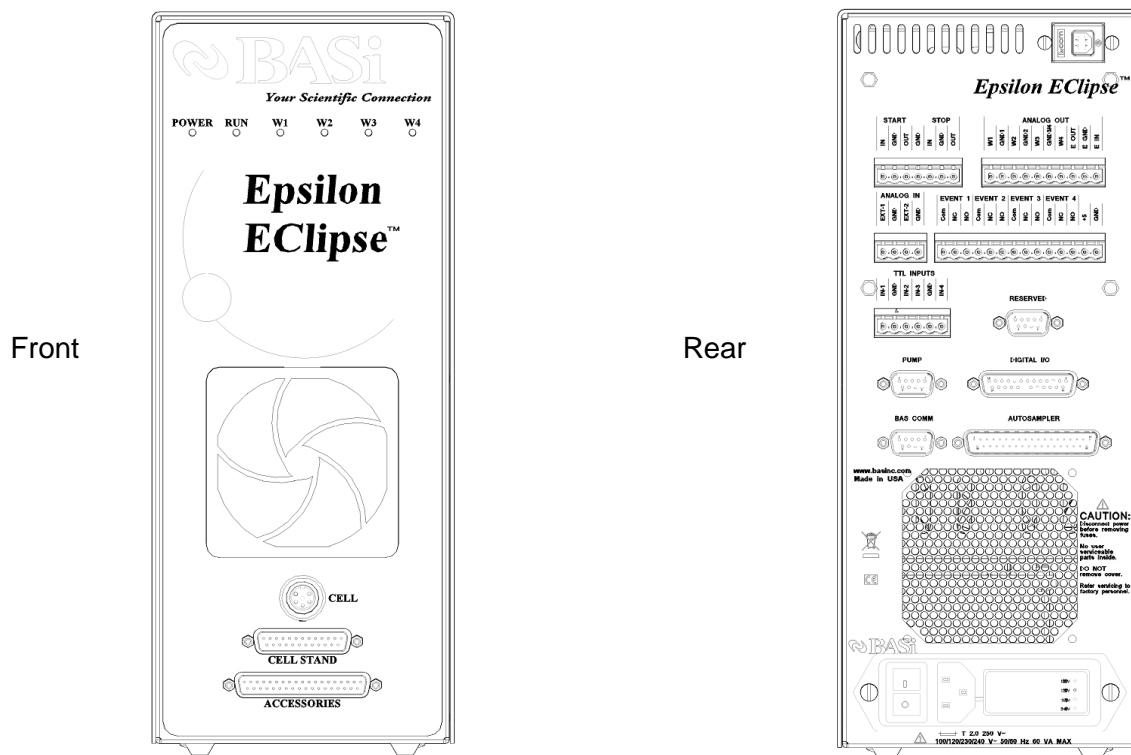
Follow the instructions as they appear on the monitor.

The minimum PC requirements are:  
Windows 7 or newer  
512 MB RAM  
50 MB hard drive space available  
USB port

## Computer Connection

Connect a standard USB cable (included) between any USB port on the computer and the USB port on the Epsilon EClipse™ (Figure 2).

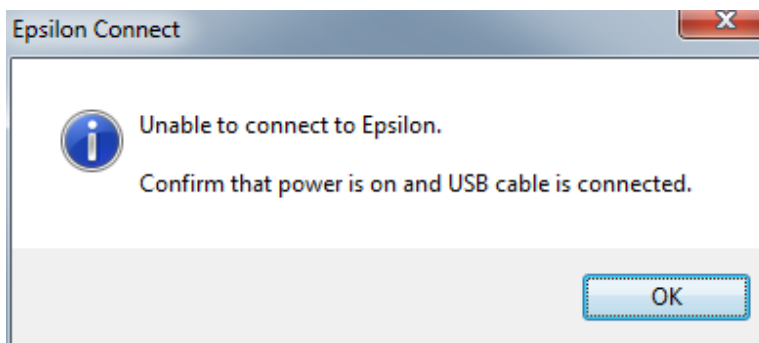
Figure 2 Connection ports



## Starting the Epsilon EClipse™

The most important part of starting the Epsilon EClipse™ is establishing the link between the instrument and the PC. The Epsilon EClipse™ should be switched on first, and then Epsilon EClipse™ software should be opened on the PC. The link between the PC and the instrument will automatically be established. The status of the link will be displayed in the bottom left corner of the software, which will display “Epsilon Connected” once connection has been established. If the instrument and PC fail to connect, the message shown in Figure 3 will appear on the PC screen. If the link is broken after it has been established, the PC and Epsilon EClipse™ can be reconnected using Reconnect Epsilon in the Instrument menu.

Figure 3. Failed Epsilon EClipse™ – PC connection message.



## Cell Connection

The cell lead cable is the group of wires that connects the Epsilon EClipse™ to the electrodes of the electrochemical cell. If the Epsilon EClipse™ will be used with a BASi cell stand (e.g., C3, CGME, or RDE), please see the specific cell stand manuals for connection and operation of these accessories. To function correctly, the connected Cell Stand must be selected within the software (Setup setting in the Instrument Menu).

A general purpose cell lead cable is supplied with the Epsilon EClipse™. The general purpose cable plugs into the W1 port on the front panel and terminates with alligator clips that attach directly to the electrodes.

There are 3 electrode leads and 1 grounded (shielding) lead.

The color code is:

- Black covered wire: Working electrode lead
- Red covered wire: Auxiliary electrode lead
- White covered wire: Reference electrode lead
- Bare or black wire w/lug: Earth ground connector

**WARNING: NEVER CONNECT OR ADJUST THE CELL LEADS DURING AN EXPERIMENT OR WHEN CELL=ON. DOING SO COULD DAMAGE THE SENSITIVE AMPLIFIERS AND VOID YOUR WARRANTY.**